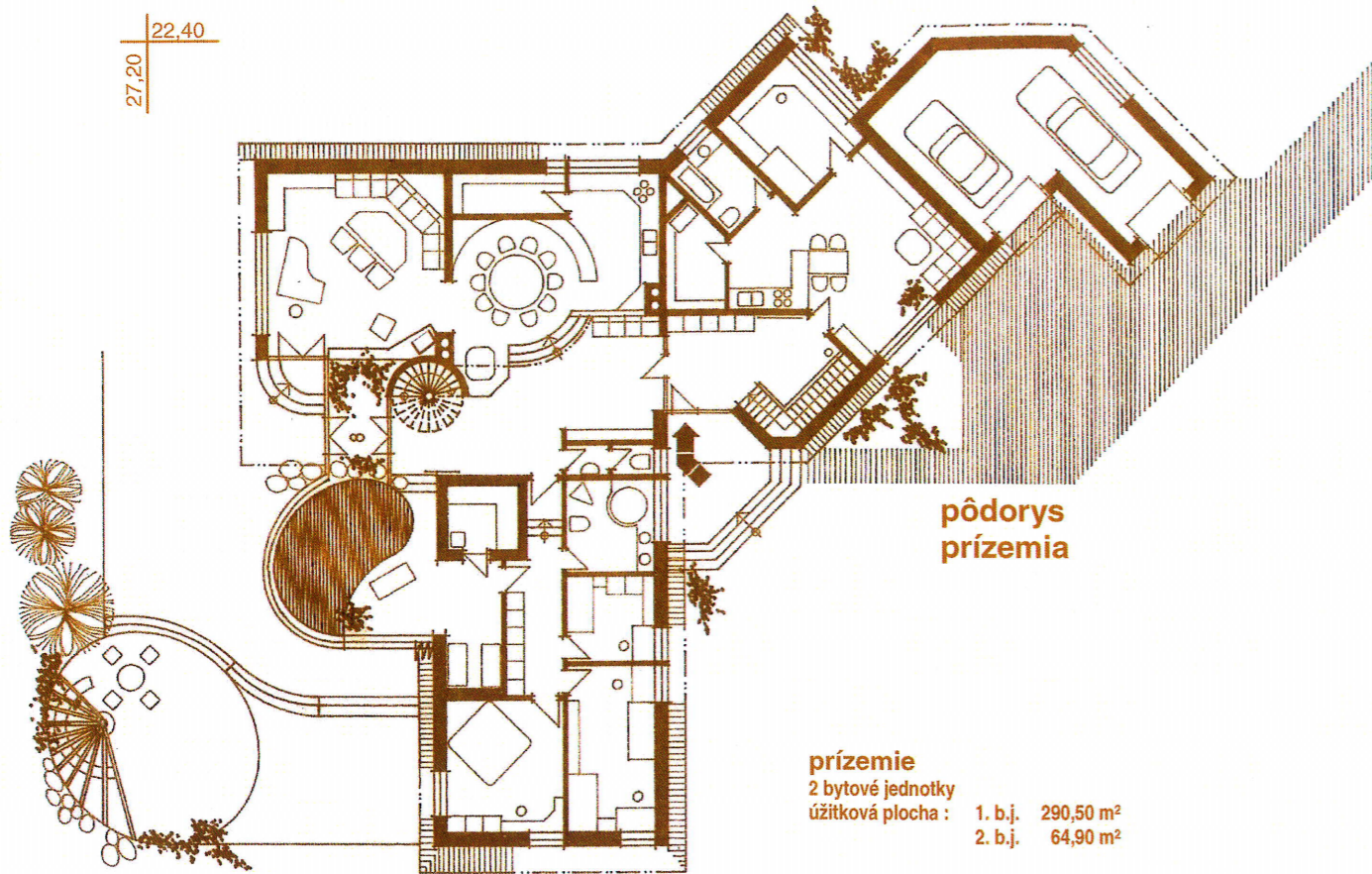
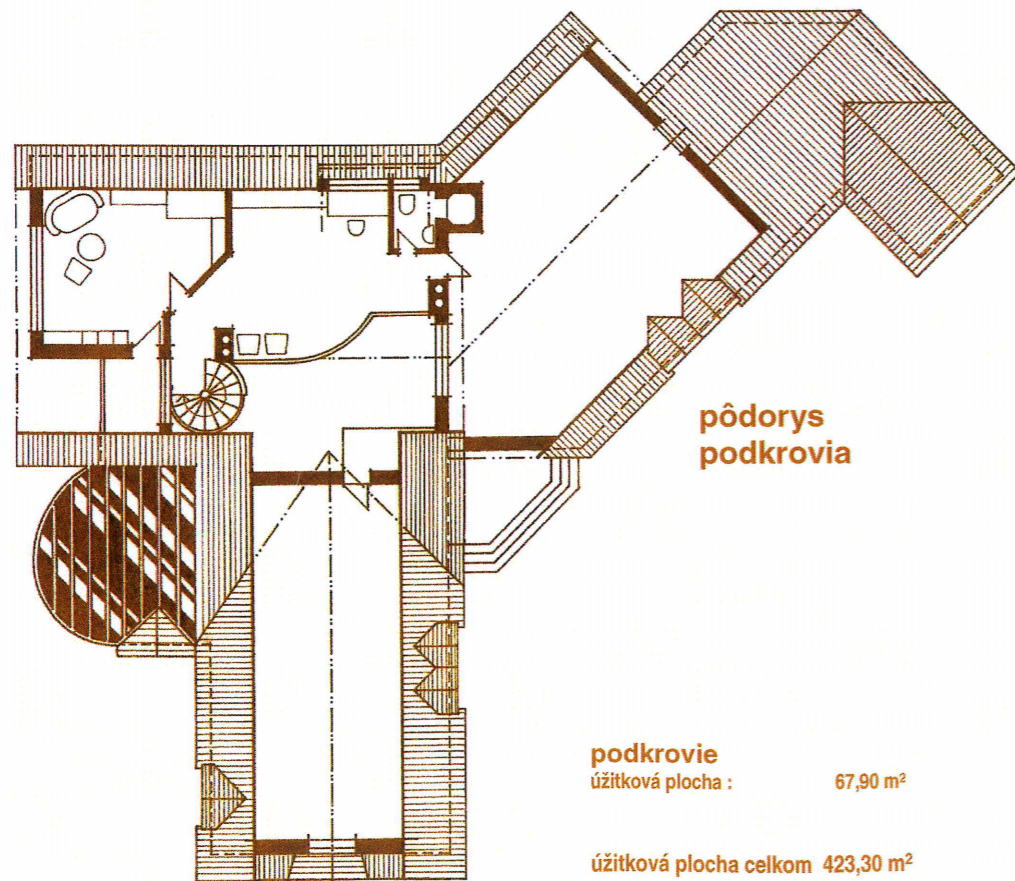


27,20 | 22,40



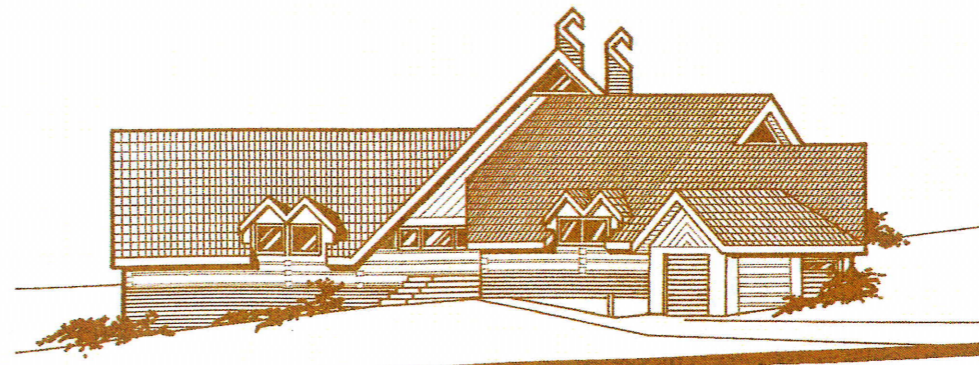
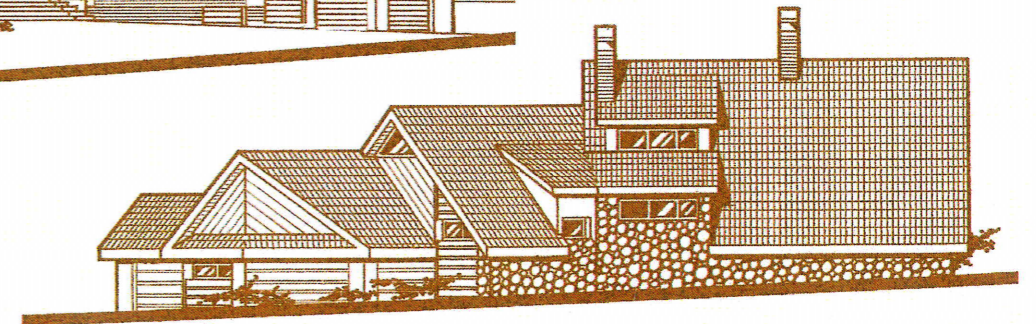
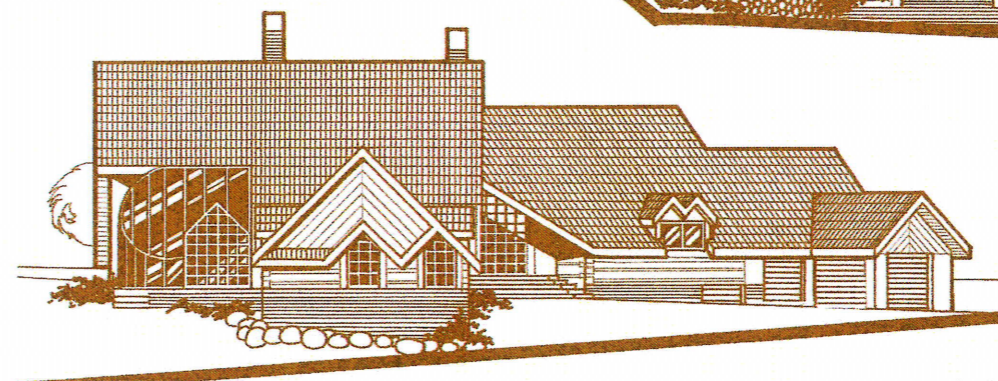
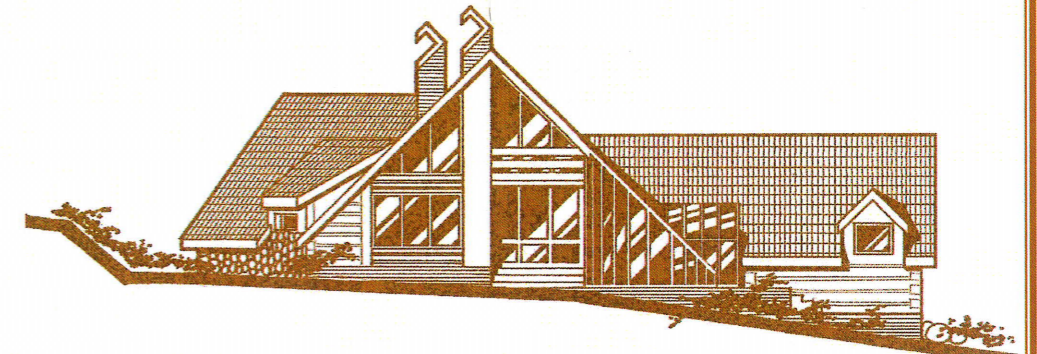
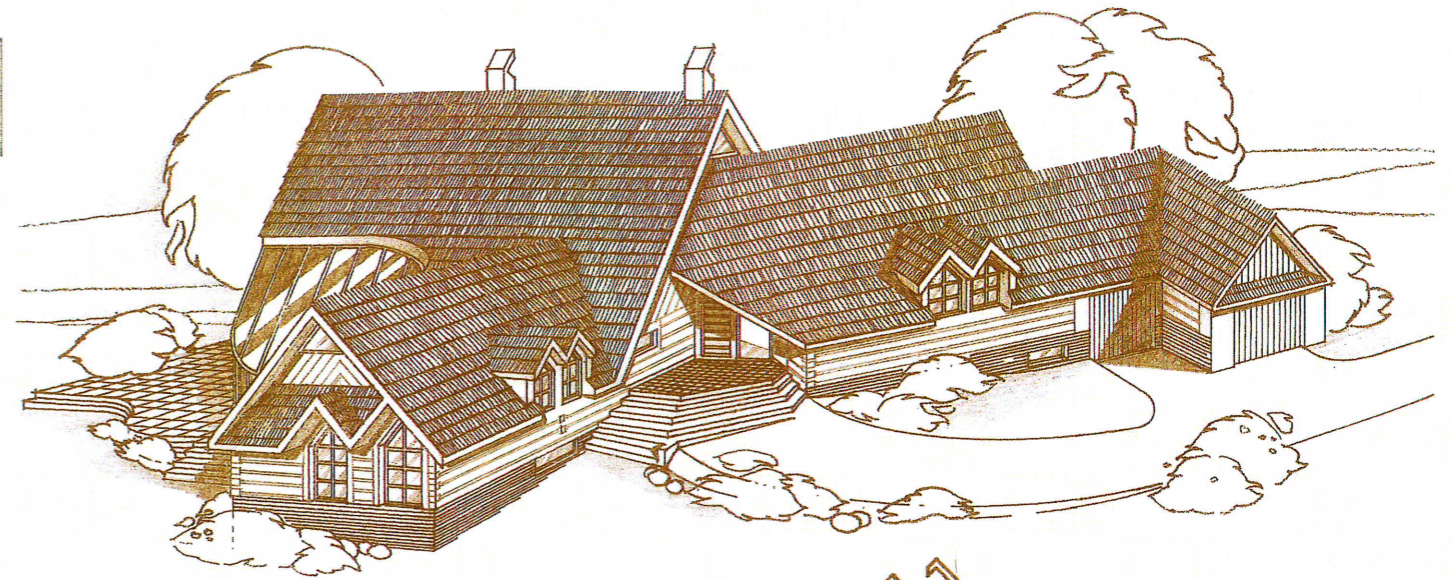
pôdorys  
prízemia

prízemie  
2 bytové jednotky  
úžitková plocha : 1. b.j. 290,50 m<sup>2</sup>  
2. b.j. 64,90 m<sup>2</sup>



pôdorys  
podkrovia

podkrovia  
úžitková plocha : 67,90 m<sup>2</sup>  
úžitková plocha celkom 423,30 m<sup>2</sup>



• Drevenice • Architektonická štúdia

rodinný dom NIA